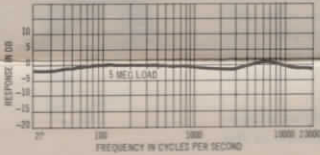


Installation of Electro-Voice Models 21, 21D, 22, 22D, 26, 26D, 27 & 27D.

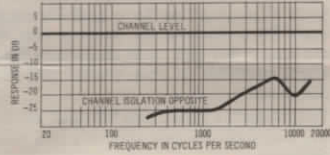
Models 21, 21D, 22 and 22D are single-needle 33 $\frac{1}{2}$ /45 rpm units whereas Models 26, 26D, 27 and 27D are two-needle turnover cartridges, with one 0.7-mil stylus for 33 $\frac{1}{2}$ /45 rpm stereo and monaural records, the other, a 3-mil stylus for 78 rpm monaural records. In the model numbers, "S" indicates synthetic sapphire tip, "D" denotes diamond tip. Models with "M" suffixes produce velocity output curves, directly replacing all magnetic-type cartridges such as G-E, Pickering, Fairchild, etc.

SPECIFICATIONS

	21, 21D, 26 & 26D	22, 22D, 27 & 27D
Response:	20 to 20,000 cps	Velocity Flat (Westrex 1A)
Elements:	Two PZT ceramic	Two PZT ceramic
Output:	0.5 volts	20 millivolts nominal
Impedance or Load:	5 megohm	22,000 ohms (magnetic input) to 47,000
Compliance:		
Lateral:	2×10^{-6} dynes/cm	2.0×10^{-6} dynes/cm
Vertical:	2×10^{-6} dynes/cm	2.0×10^{-6} dynes/cm
Isolation:	25 db @ 1 kc	25 db @ 1 kc
Tracking Force:	5 to 7 grams	5 to 7 grams
Stylus:	See "Replacement Stylus" below	
Terminals:	Standard 0.050 connectors	
Mounting:	EIA Standard $\frac{1}{2}$ " and $\frac{3}{16}$ " centers	



Frequency Range Response from Standard Westrex 1A Test Record, Compensated from velocity characteristic.

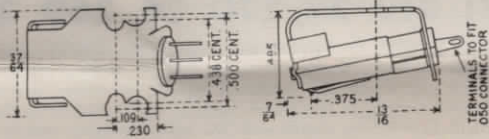


High Channel Isolation in Stereo Range, especially important above 300 cps where the masking effect of the head on the reception of each ear creates the stereo illusion.

MOUNTING REQUIREMENTS

Mounting centers are standard $\frac{1}{2}$ " and $\frac{3}{16}$ ". After installation in the tone arm the stylus pressure should be adjusted to provide a weight of 5 to 7 grams at the tip. If existing adjustment available on the arm is not sufficient, additional tone arm weights should be affixed (adhesive) inside the arm or head case (a piece of lead $\frac{3}{16}$ "

in diameter by $\frac{1}{8}$ " thick will provide 4 grams; as a comparative guide one nickel weighs approximately 5 grams).



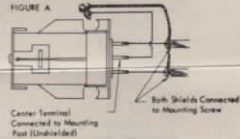
WIRING

Standard Series:

The requirement for proper matching is a simple one: Feed the leads from each outside terminal (and the center "ground" terminal) into the amplifiers' inputs marked CERAMIC or CRYSTAL PHONO. For best bass response, the input should be fed into a 5-megohm resistor across the grid. In some cases, this calls for a minor rewiring adjustment.

NOTE

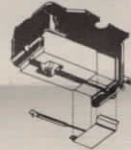
In fitting the cartridge to certain tone arms fabricated of metal it is essential to ground the arm casing into the circuit. Figure A gives a simple and effective method of avoiding hum pickup by using a mounting screw connection.



REPLACEMENT STYLI

To insure minimum wear on your records, the cartridge stylus should be replaced periodically, i.e. after about 60 hours of playing time for a synthetic sapphire tip, after 600 hours for a diamond tip. Because only the finest jewel tips are used in E-V styli, insist on genuine Electro-Voice replacements available at your nearby authorized E-V dealer or distributor.

To replace the stylus, carefully pull off the old stylus assembly and snap the new assembly into place as shown in the diagram.



E-V Stylus	E-V Cartridge	Stylus Radius/Type	Application	Color Code
2604D	21D, 22D, 26D, 27D	0.7-Mil Diamond	33 $\frac{1}{3}$ /45 rpm	Gold
2604	22, 21, 27, 26	0.7-Mil Synthetic Sapphire	33 $\frac{1}{3}$ /45 rpm	Silver
2605	27, 26, 26D, 27D	3-Mil Synthetic Sapphire	78 rpm (monaural)	Silver